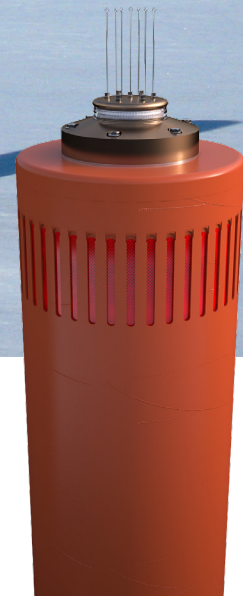


Ice Buoy Medium

SVV500

SeaHow[®]
by Arctia



Robustness and conspicuity for ice covered areas

Ice Buoy Medium SVV500 is economically feasible buoy for use in ice covered areas. It provides durability that is equal to many steel buoys of similar size, but much more maintenance-free years.

SVV500 is normally moored with taut chain which gives superior accuracy for the buoy location. Taut mooring is also advantageous when considering the survival among the ice.

The buoy can be equipped with any lantern in the market, self-contained or battery operated. Additional instrumentation and sensors of many kinds can be encapsulated inside the buoy body.

For tidal areas we recommend the use of Coastal Buoy VPU500 which is similar type of buoy but deployed conventionally with slack chain.

Area of use

Ice covered areas
Narrow channels
Smart Buoy solutions
Platform for various use

Specifications

*) can be adjusted according to customer needs

Overall length *)	10.15 m	Retro-reflector	380 cm ² (3M diamond)
Diameter	500 mm	Radar reflector	Trihedral TH500
Draft *)	6.55 m	Radar cross area RCS	20 m ² (X-band)
Wall thickness	30 mm	Surface color	IALA-E108
Polyethylene material	HD 100 extruded pipe	Color and UV stability	26 years (lat. 50) on main surfaces
Polystyrene filling	EPS 150 closed shell	Mooring sinker weight	6 - 8 ton
Dry weight without ballast	754 kg	Maximum current	2 kn
Chain load at MSL	502 kg	Maximum wave height	4 m (significant)
Buoyancy at MSL	1256 kg	Lantern *)	Sabik as default
Focal plane at MSL *)	3.5 m	Battery capacity	220 Ah
Nautical conspicuity	3 NM	Top Mark	Optional

We can customize the buoys for your needs

